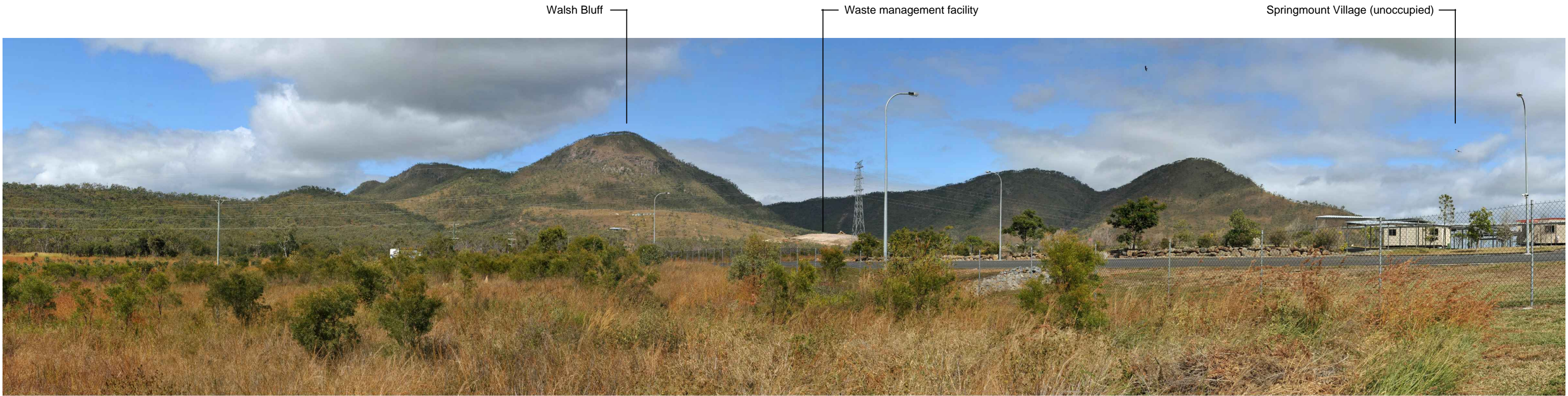
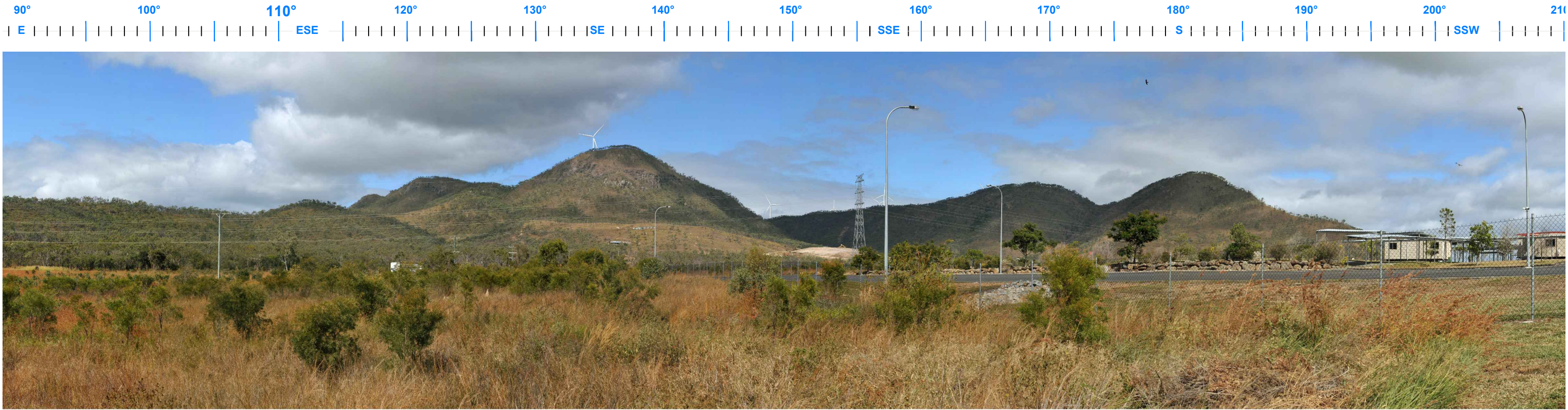


Image Source GBD 2013



Photomontage Location M53 Residential Dwelling R89 (and Spingmount Village). Existing view east to south south west.

Image Source GBD 2013



Photomontage Location M53 Residential Dwelling R89 (and Springmount Village). Proposed view east to south south west.

# MT. EMERALD WIND FARM

Refer Figure 16 for Photomontage Location.

Individual panorama photos taken with a Nikon D700 digital SLR camera with 50 mm prime lens.

Photo coordinates: Easting 323902 Northing 8105214 (MGA 94z55H).  
Approximate distance to nearest visible turbine 1.34 km



# MOUNT EMERALD WIND FARM

Image Source GBD 2013

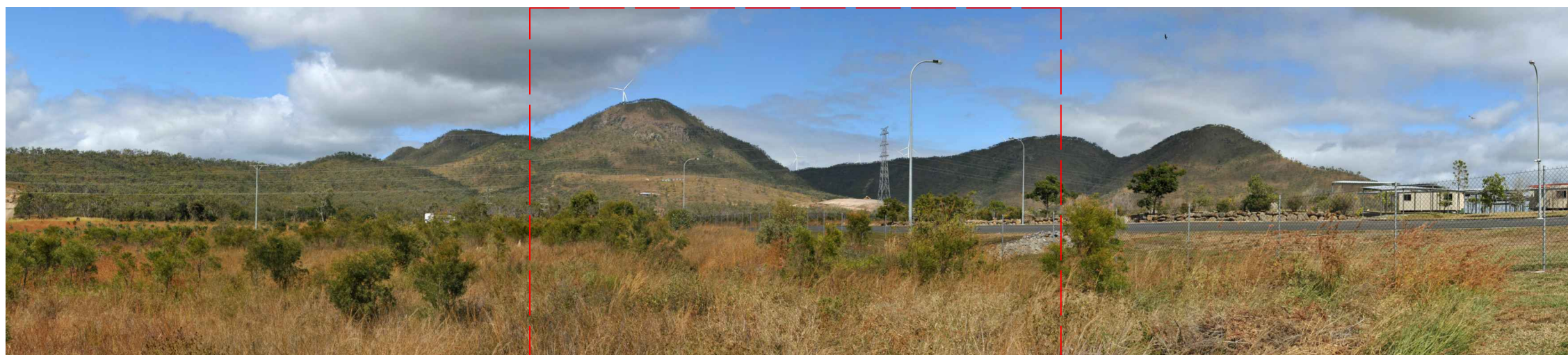


Figure 36  
Photomontage PM 9 Sheet 2

Refer Figure 16 for Photomontage Location

Individual panorama photos taken with a Nikon D700 digital SLR camera with 50 mm prime lens.

Photo coordinates:  
Easting 323902  
Northing 8105214 (MGA 94z55H)

Approximate distance to nearest visible turbine 1.34 km

Photomontage Location M53 Residential Dwelling R89

Indicative extent of single frame photo  
(refer detail below)

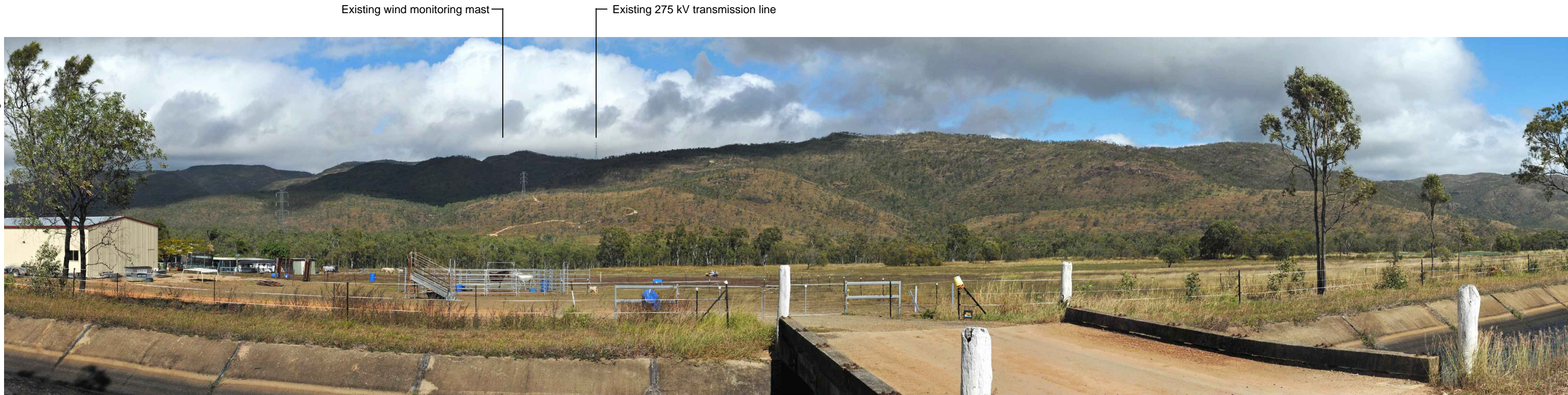
Image Source GBD 2013



Photomontage Location M53 - Single frame photo detail, proposed view



Image Source GBD 2013



Photomontage Location M63 Residential Dwelling R36. Existing view south south east to west.

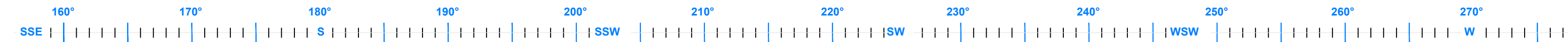


Image Source GBD 2013



Photomontage Location M63 Residential Dwelling R36. Proposed view south south east to west.

Refer Figure 16 for Photomontage Location.

Individual panorama photos taken with a Nikon D700 digital SLR camera with 50 mm prime lens.

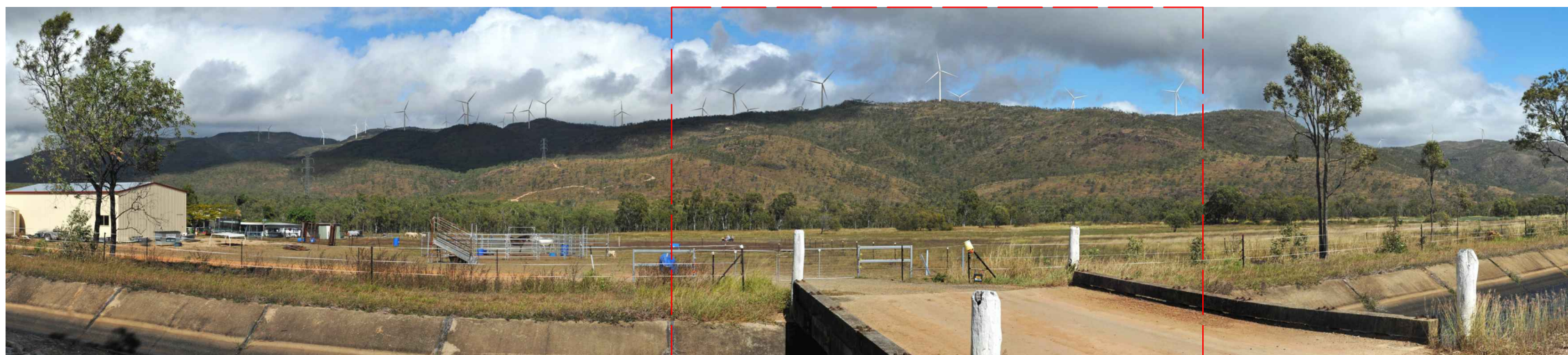
Photo coordinates: Easting 330268 Northing 8103817 (MGA 94z55H).  
Approximate distance to nearest visible turbine 2.07 km

# MT. EMERALD WIND FARM



# MOUNT EMERALD WIND FARM

Image Source GBD 2013



Photomontage Location M63 Residential Dwelling R36

Indicative extent of single frame photo  
(refer detail below)

Figure 38  
Photomontage PM 10 Sheet 2

Refer Figure 16 for Photomontage  
Location

Individual panorama photos taken with  
a Nikon D700 digital SLR camera with  
50 mm prime lens.

Photo coordinates:  
Easting 330268  
Northing 8103817 (MGA 94z55H)

Approximate distance to nearest visible  
turbine 2.07 km

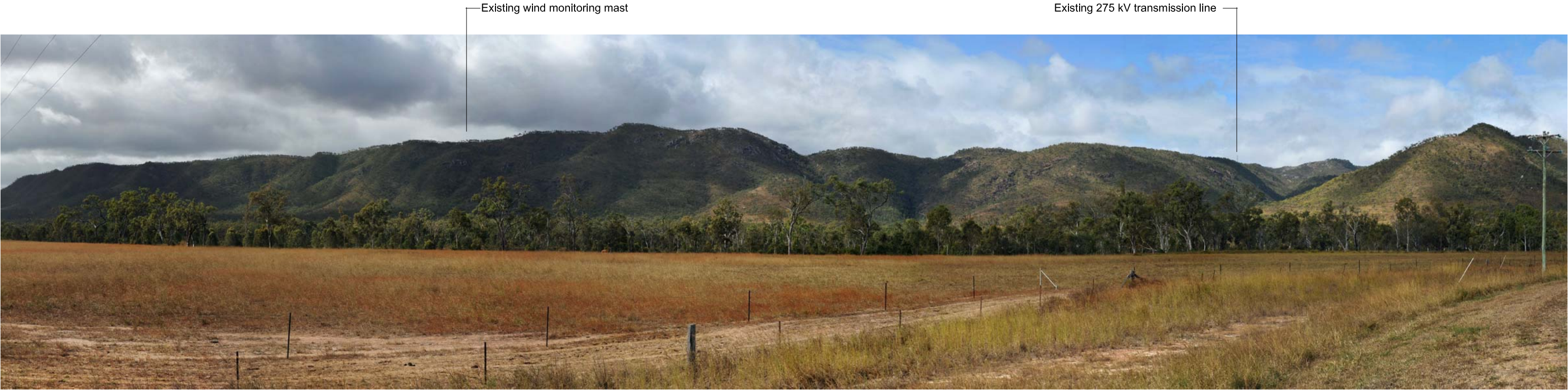
Image Source GBD 2013



Photomontage Location M63 - Single frame photo detail, proposed view



Image Source GBD 2013



Photomontage Location M29 Oaky Valley Road. Existing view north to east south east.

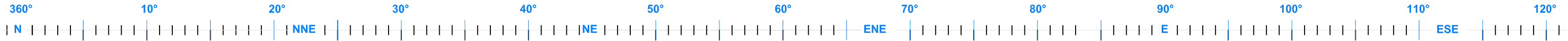


Image Source GBD 2013



Photomontage Location M29 Oaky Valley Road. Proposed view north to east south east.

# MT. EMERALD WIND FARM

Refer Figure 16 for Photomontage Location.

Individual panorama photos taken with a Nikon D700 digital SLR camera with 50 mm prime lens.

Photo coordinates: Easting 323936 Northing 8098965 (MGA 94z55H).  
Approximate distance to nearest visible turbine 2.8 km



Image Source GBD 2013



Photomontage Location M29 Oaky Valley Road

Indicative extent of single frame photo  
(refer detail below)

Figure 40  
Photomontage PM 11 Sheet 2

Refer Figure 16 for Photomontage  
Location

Individual panorama photos taken with  
a Nikon D700 digital SLR camera with  
50 mm prime lens.

Photo coordinates:  
Easting 323936  
Northing 8098965 (MGA 94z55H)

Approximate distance to nearest visible  
turbine 2.8 km

Image Source GBD 2013



Photomontage Location M29 - Single frame photo detail, proposed view





Photomontage Location M3 Kennedy Highway. Existing view south to west north west.



Photomontage Location M3 Kennedy Highway. Proposed view south to west north west.

Refer Figure 16 for Photomontage Location.

Individual panorama photos taken with a Nikon D700 digital SLR camera with 50 mm prime lens.

Photo coordinates: Easting 332665 Northing 8106499 (MGA 94z55H).  
Approximate distance to nearest visible turbine 5.8 km



Image Source GBD 2013



Photomontage Location M3 Kennedy Highway

Indicative extent of single frame photo  
(refer detail below)

Figure 42  
Photomontage PM 12 Sheet 2

Refer Figure 16 for Photomontage  
Location

Individual panorama photos taken with  
a Nikon D700 digital SLR camera with  
50 mm prime lens.

Photo coordinates:  
Easting 332665  
Northing 8106499 (MGA 94z55H)

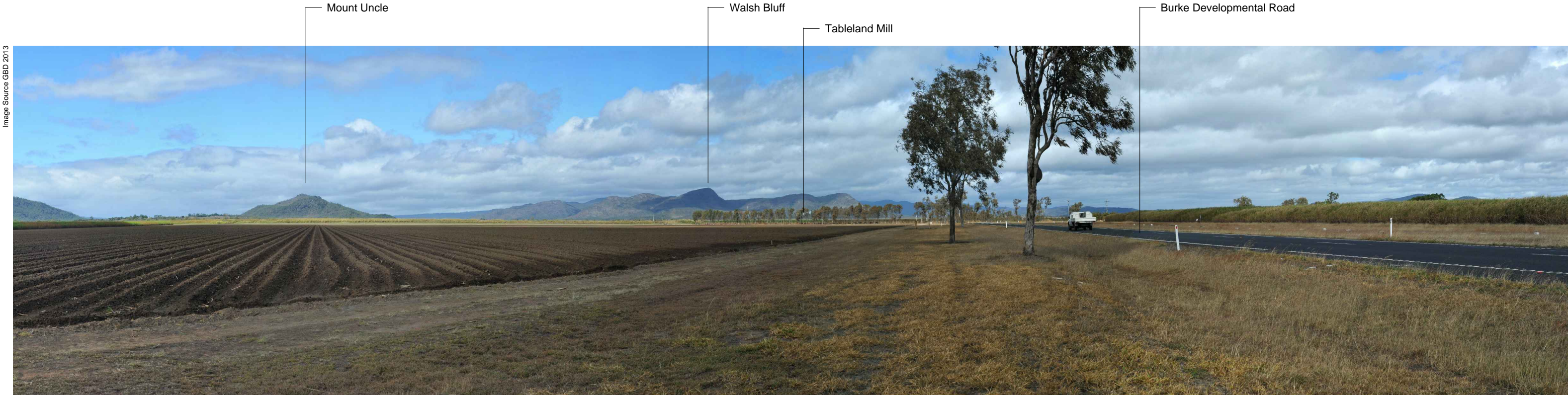
Approximate distance to nearest visible  
turbine 5.8 km

Image Source GBD 2013



Photomontage Location M3 - Single frame photo detail, proposed view





Photomontage Location M66 Burke Developmental Road. Existing view east south east to south west.



Photomontage Location M66 Burke Developmental Road. Proposed view east south east to south west.

Refer Figure 16 for Photomontage Location.

Individual panorama photos taken with a Nikon D700 digital SLR camera with 50 mm prime lens.

Photo coordinates: Easting 322452 Northing 8111537 (MGA 94z55H).  
Approximate distance to nearest visible turbine 8.4 km

# MT. EMERALD WIND FARM



Image Source GBD 2013



Figure 44  
Photomontage PM 13 Sheet 2

Refer Figure 16 for Photomontage Location

Individual panorama photos taken with a Nikon D700 digital SLR camera with 50 mm prime lens.

Photo coordinates:  
Easting 322452  
Northing 8111537 (MGA 94z55H)

Approximate distance to nearest visible turbine 8.4 km

Photomontage Location M66 Burke Developmental Road

Indicative extent of single frame photo (refer detail below)

Image Source GBD 2013



Photomontage Location M66 - Single frame photo detail, proposed view



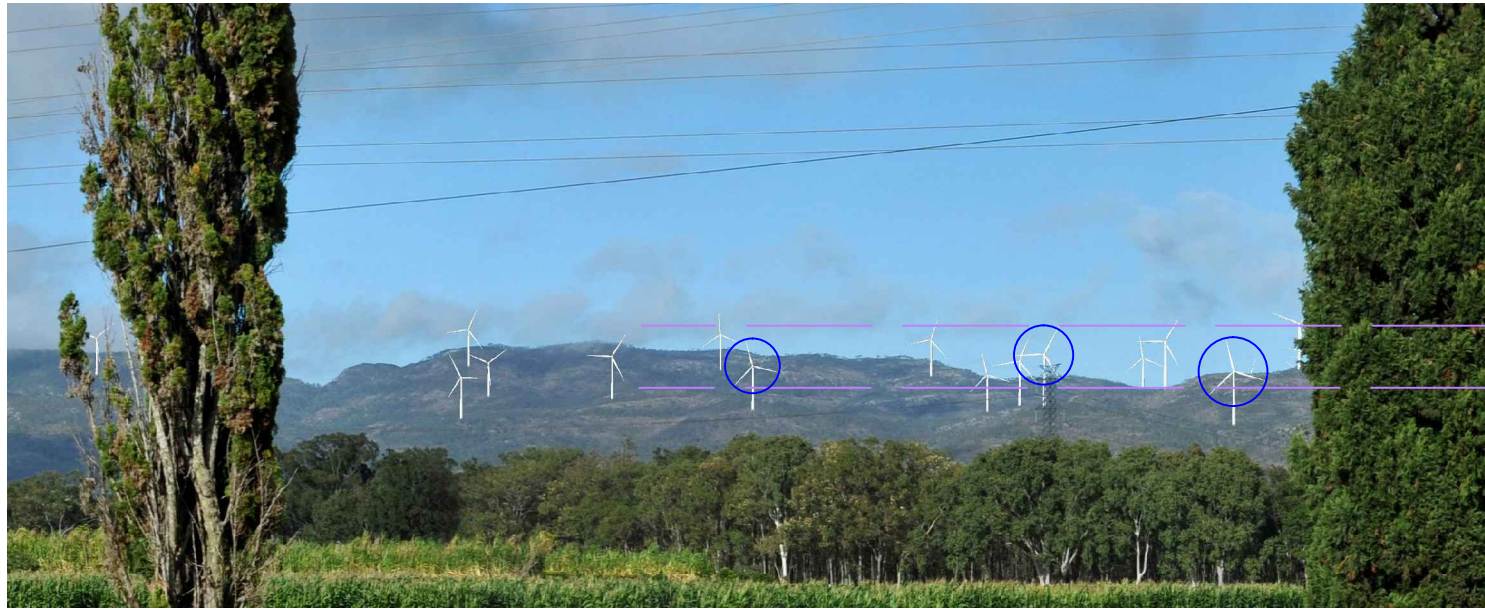
### 10.3 Photomontage verification

Photomontages prepared for wind farm developments are sometimes claimed not to represent the correct relative scale of the wind turbines within the baseline panorama or single photographic images. Whilst modern windfarm industry software, such as WindFarmer, is able to produce correctly scaled turbines within photomontages, GBD undertook to independently verify the scale of the Mount Emerald wind turbines within the photomontages.

The verification process involved the direct photographic comparison of constructed and operational wind turbines at the Gunning wind farm development with those presented in the photomontages.

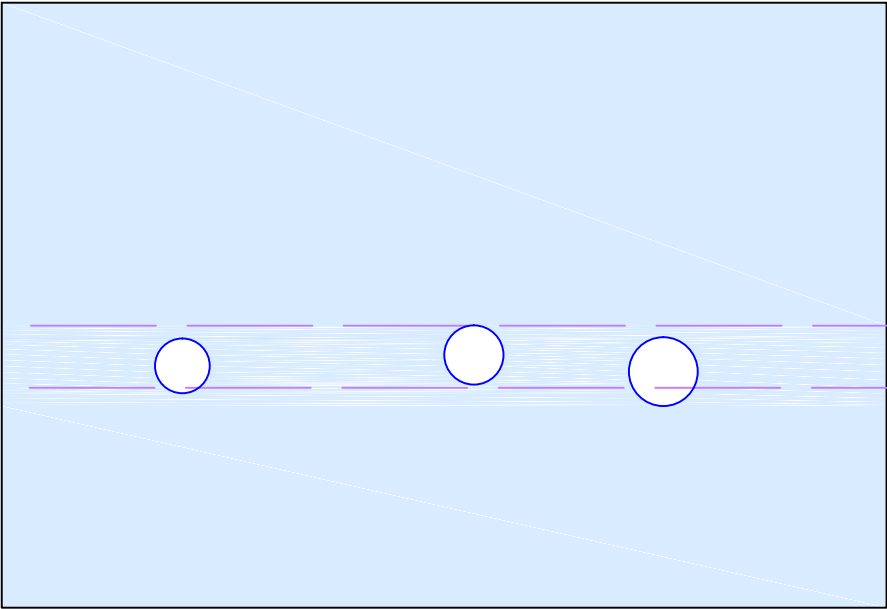
The results of the verification are illustrated in **Figure 45**, and demonstrate that the wind turbines in the Mount Emerald photomontages are proportional relative to distance when compared to photographs of existing and operation wind turbines photographed at a similar distance.





Proposed Mount Emerald wind farm photomontage.

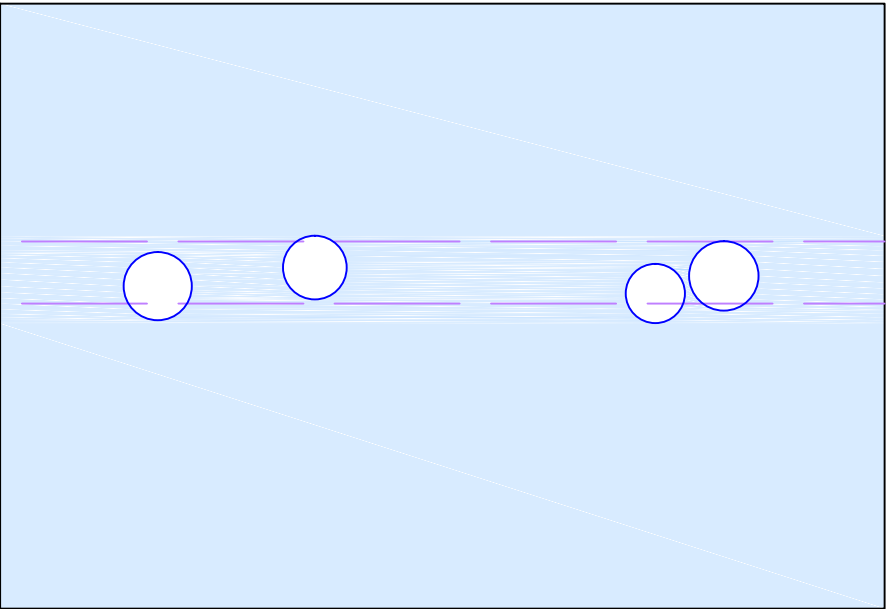
Public view location PM 1 Hibiscus Street, Walkamin - Existing view south to west north west  
 Photo coordinates: Easting 332643 Northing 8105315 (MGA 94z55H). Approximate distance to nearest visible turbine 4.8 km



Mount Emerald wind turbine photomontage- comparative rotor swept area  
 Wind turbine 130.5 m tip height (80 m tower with 49.5 m rotor length)



Existing view toward the operational Capital wind farm turbines from around 4.5 km



Capital wind turbine photograph- comparative rotor swept area  
 Wind turbine 124 m tip height (80 m tower with 44 m rotor length)

**Figure 45**  
**Comparison of operational and**  
**photomontage wind turbines**

# MOUNT EMERALD WIND FARM